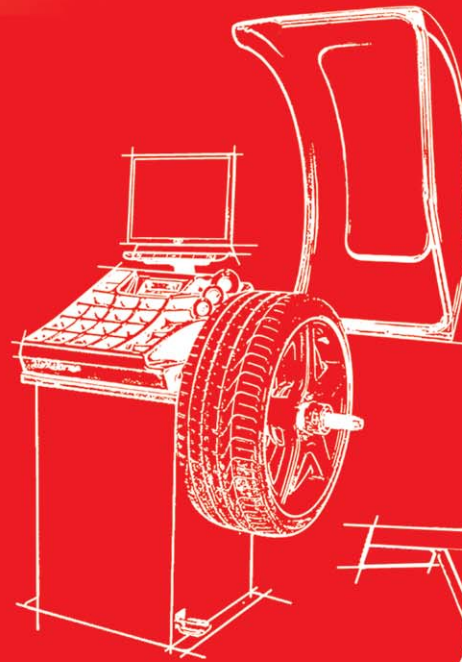
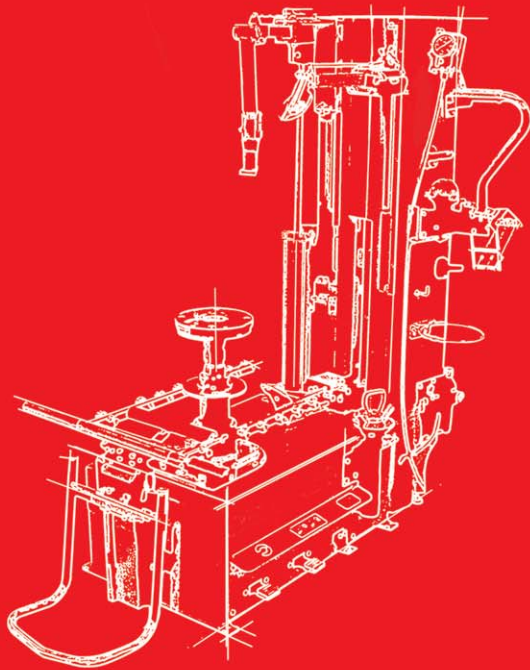


Butler

PEOPLE, IDEAS, PRODUCTS



20 1988
years of 2008
Butler

20 ¹⁹⁸⁸₂₀₀₈
years of
Butler

BUTLER

Leader in the tyre service equipment
industry for **20 years**

PEOPLE, IDEAS, PRODUCTS



The Company



BUTLER is today one of the world's top-ranking companies in the tyre service equipment industry.

BUTLER is one of the world leading manufacturer of tyre changers and among the major manufacturers of wheel balancers and alignment equipment.



Products



BUTLER offers a wide and unique product range in its sector. With a single supplier one can satisfy all equipment needs with regards to:

- » **Tyre Service**
- » **Wheel Alignment**
- » **Vehicle Lifting**
- » **Brake, Suspension, Side-slip Testing**

The equipment is available for cars and vans, commercial vehicles and motorcycles.

The Company

20 ¹⁹⁸⁸₂₀₀₈
years of
Butler

A few numbers on the present production performance of the Butler Group are:

- 12.000 Tyre changers per year
- 5.000 Balancers per year
- 25.000 Lifts per year
- 3.000 Aligners per year



History

1988
2008
20 years of
Butler

20 YEARS OF EXPERIENCE IN TYRE SERVICE



History

20 years of
Butler
1988
2008

20 YEARS OF EXPERIENCE IN TYRE SERVICE



Homologations



The Machine Directive allows self-certification, but Butler has worked for years with the **organization Bureau Veritas**, as a further guarantee to customer, for the "type-approval" of its garage equipment.



Quality

20 years of
Butler
1988
2008

The **ISO 9001** certification obtained in 1997 (now **VISION 2000**), proves Butler's constant commitment to offer high quality products and a well-organized service customer.



Approvals

1988
2008
20 years of
Butler

Tyre service equipment was tested and **approved** by the best known tyre and rim manufacturers such as:

- **Michelin**
- **Bridgestone**
- **Good-Year**
- **BBS**
- **Continental**
- **Dunlop**
- **Uni-Royal**



Approvals

1988
2008
20 years of
Butler

Tyre service equipment was tested and **approved** by the best known tyre and rim manufacturers such as:

- **Michelin**
- **Bridgestone**
- **Good-Year**
- **BBS**
- **Continental**
- **Dunlop**
- **Uni-Royal**



Approvals

1988
2008
20 years of
Butler

Special equipment is developed in cooperation with vehicle manufacturers:

Mercedes-Benz Verpfändungserklärung zu Prüfständen und Geräten für Mercedes-Benz Werkstätten

Die Firma (Hersteller/Lieferant)
Firma Butler, Italy 42010 Rio Saliceto
- in folgenden Firmen genannt -
hat das Werkstatz-Betriebsmittel (WBM)
Typ oder Betriebsbezeichnung **Zusammenbauergesetz für PKW, GW, TN, Butler Airdraulc EVO...**
mit Zulassung **40.1 E 95.1**
() entworfen () auf Anforderung gefertigt (X) angeboten
Die DaimlerChrysler AG, Stuttgart, Abteilung **VSE/PO**
- in folgenden Firmen/Chrysler genannt -
hat die Firma über die Anforderungen informiert, die von der DaimlerChrysler AG an das WBM gestellt werden.
Aufgrund der Sach- und Funktionsprüfung des WBM ohne Zerstörung hat DaimlerChrysler festgestellt, daß die Firma die von DaimlerChrysler angegebenen Anforderungen berücksichtigt hat. Damit ist das WBM für den herkömmlichen Verwendungszweck anwendbar.
DaimlerChrysler erklärt sich damit einverstanden, daß die Firma das WBM den Mercedes-Benz Werkstätten zum Kauf anbietet und auf die Anwenbarkeit-Bestätigung hinweist, sofern die Firma die auf der Rückseite genannten Anforderungen einleitet.
Bespätker dieser Verpfändungserklärung sind die gegebenenfalls beigefügten technischen Daten, Richtlinien für die Ausführung oder Zusammenstellung des WBM, oder sonstigen Dokumentationen zum WBM (siehe Anlage-Namen).
Die Anforderungen an das WBM werden dem Stand der Mercedes-Benz-Produkte angepaßt und im Beistand der Firma anzufragen. Sollten sich entsprechende Änderungen herausstellen, werden die nachfolgenden Lieferungen den neuen Anforderungen entsprechend ausgeführt werden.
Anlagen: **Technische Daten, Ausführungsrichtlinien, Stellungnahmen, Best.-, Qualitätsmanagement**
40.1 E 95.1 vom 20.03.2000 (4 Seiten)

DaimlerChrysler
DaimlerChrysler AG
70372 Stuttgart
S. E. H.

Firma (Stempel)
BUTLER S.R.L.
Via...
Peschiera del Garda (VR) 37030

Unterschriften:
Datum:
Stempel/Chrysler AG
Stempel/Butler

PORSCHE

Service 3. Workshop Equipment

Butler airdraulic proff tire removal and mounting machine
For all car wheels, including wheels with asymetric horns. Special wheels and racing wheels can also be handled.

Description
Sturdy heavy developed and with new type of removal and mounting system. The wheel is removed and turned automatically by an electric motor. The mounting and lock are done with the pneumatic tire press and with wheel can be individually controlled simply using the pedal. In parts which come into contact with the tire are made of rubber or plastic.

Advantages

- No damage to wheel in the during mounting and removal.
- The tire is pressed off by rollers without damage to the wheel horns.
- Operation operation possible even when working on wheels which are difficult to handle.
- Only compressed air supply required.

Technical data

Removal range: wheel: 12 to 23 inch axle: 20 to 25 inch tire width: up to 19 inch
Motor speed: 13 rpm
Compressed air supply: Force applied by: 1800 kg Weight: 200 kg

Scope of delivery
Butler airdraulic proff, as described Code No. 133 0200

© by Dr.-Ing. h.c. F. Porsche
Angebotnummer: Supplement 4
Printed in Germany 1/92 Seite 4
Page 3 of 7

BMW Run Flat Tyre-Changer / Upgrade-Kit
Butler Code: BU 1090002

Pressure Multiplier (Option)
Force Multiplier
As Modified
Bead Depressor 2E
Central Wheel Support
Mounting Bolt
HM Bead Lever
Adapter-Plate
Special Brush
Training CD
Special Lubricant
8 x Protection for HM Bead Lever



NEW AIKIDO.34 LIGHT BMW

Products Range

20 ¹⁹⁸⁸₂₀₀₈
years of
Butler



Leverless Tyre changers

Products Range

20 years of
Butler
1988
2008



Tyre changers for car and light truck

Products Range

1988
2008
20
years of
Butler



Tyre changers for commercial vehicles

Products Range

20 ¹⁹⁸⁸₂₀₀₈
years of
Butler



Tyre changers for commercial vehicles

Products Range

1988
2008
20 years of
Butler



Tyre changers for EM, harbour and mine vehicles



Products Range

1988
2008
20
years of
Butler



Wheel balancers for cars and light trucks

Products Range

20 years of
1988 2008
Butler



Wheel balancers for commercial vehicles

Products Range

20 ¹⁹⁸⁸₂₀₀₈
years of
Butler



Automatic Alignment Station

Products Range

1988
2008
20 years of
Butler



Computerized wheel alignment

Products Range

20 years of
Butler
1988
2008

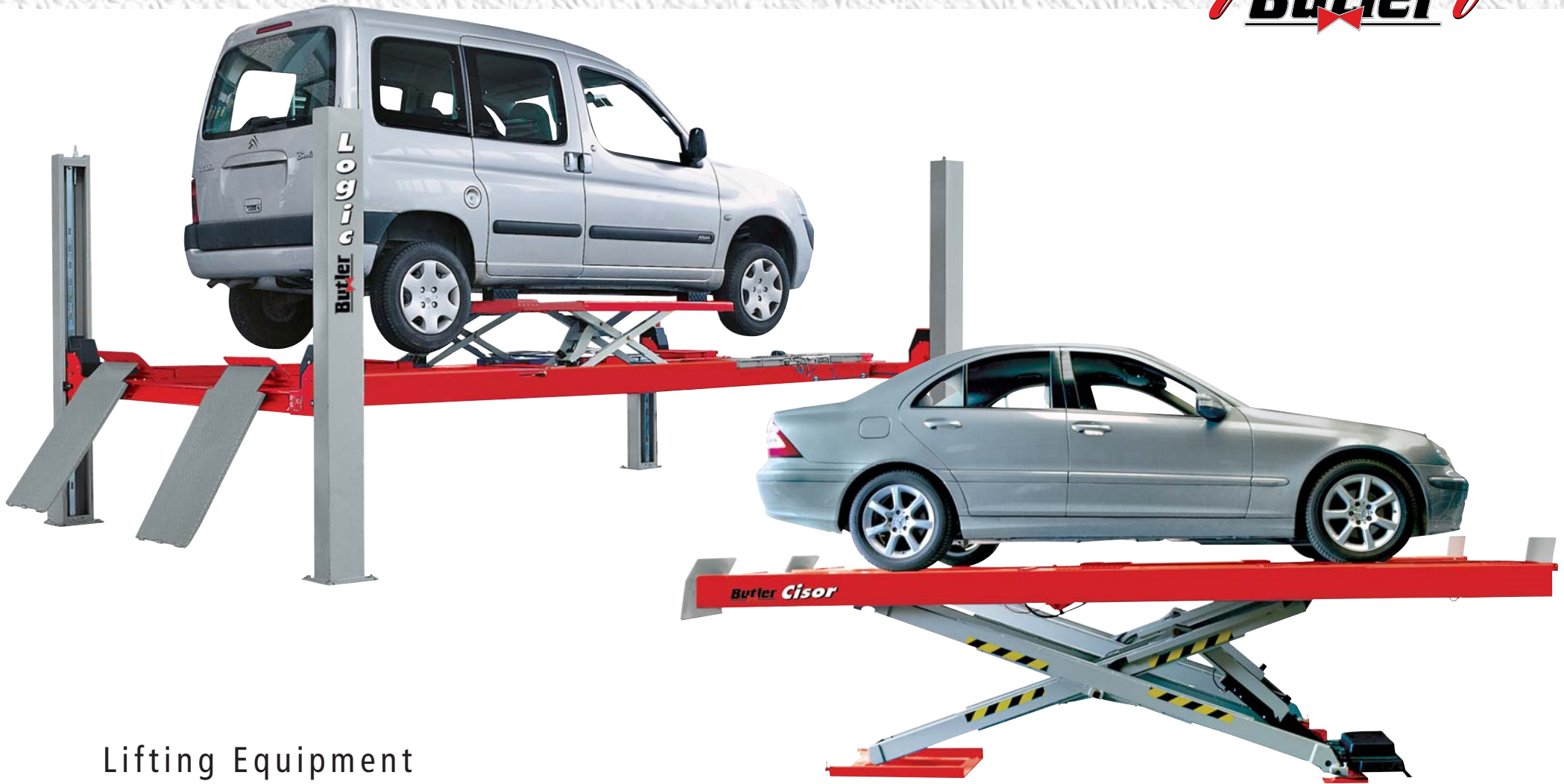


Lifting Equipment



Products Range

20 years of
Butler
1988
2008



Lifting Equipment

Products Range

20 ¹⁹⁸⁸₂₀₀₈
years of
Butler



Lifting equipment for commercial vehicles

Butler Group

1988
2008
20 years of
Butler



The Group consists of 4 factories located in different premises, all located in Italy

Rio Saliceto (Reggio Emilia)



Ostellato (Ferrara)



Trana (Turin)



Pontecchio Marconi (Bologna)



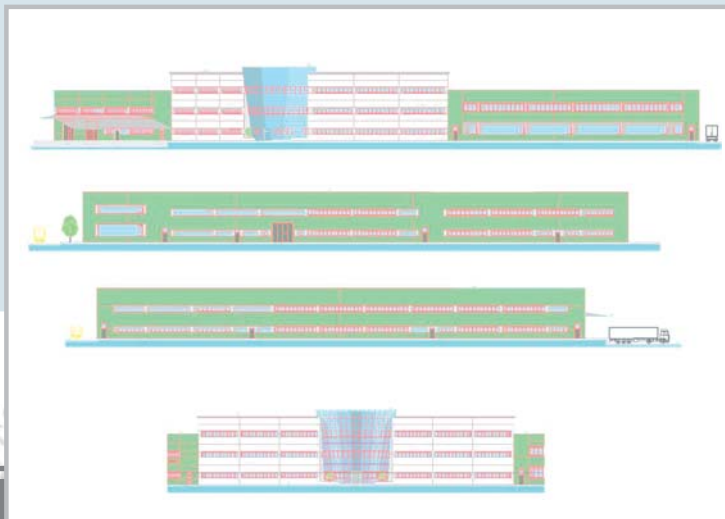


RIO SALICETO (Reggio Emilia)

Headquarters and tyre service

R&D division

14.000 square meters total surface,
8.500 square meters covered surface,
100 people work in Rio Saliceto.



The new 12.000 sq.m factory in Rolo, over an area of 26.000 sq.m, just 5 km away, is expected to be operational in the first half of 2009.



Butler Group

20 years of
Butler
1988
2008



OSTELLATO (Ferrara)

Tyre service equipment division, metal cutting, welding and folding, components manufacturing
60.000 sq.m (645.000 sq.ft) total surface
18.000 sq.m (195.000 sq.ft) covered surface (new plant, gray part, available since June 2006)
200 people work in Ostellato



Butler Group

1988
2008
20
years of
Butler



TRANA (Turin)

Aligners and test lanes division

10.000 sq.m (108.000 sq.ft) total surface,
4.500 sq.m (50.000 sq.ft) covered surface,
50 people work in Trana



Butler Group

20 ¹⁹⁸⁸ ²⁰⁰⁸ years of
Butler



PONTECCHIO MARCONI (Bologna)

Lifts production

80.000 sq.m (860.000 sq.ft) total surface

32.000 sq.m (345.000 sq.ft) covered surface

230 people work in Pontecchio



Organisation



The very **simple organisation**, despite the size of the company, and the clear division of responsibilities among the **5 divisions** allows immediate reaction and customer response:

- 1 R&D**
- 2 Production**
- 3 Sales worldwide**
- 4 Sales Italy and worldwide aftersales**
- 5 Administration and finance**



- From its foundation Butler started a specific product development to support the tyre industry.
 - From the beginning the management decided to **invest in developing Butler presence abroad**, especially on the most developed and demanding markets.
 - It was clear that the world tyre service market would have developed through the years various new tyre technology requiring specific equipment, granting stable development possibilities over the years.
 - In this way, Butler anticipated international market developments with an expansion policy aimed at a certain number of key markets.
- **In 2007 Butler exported 89% of its production**, as a proof that its development plans were correct.



In the World

20 1988
years of 2008
Butler



Butler main markets

ITALY

USA

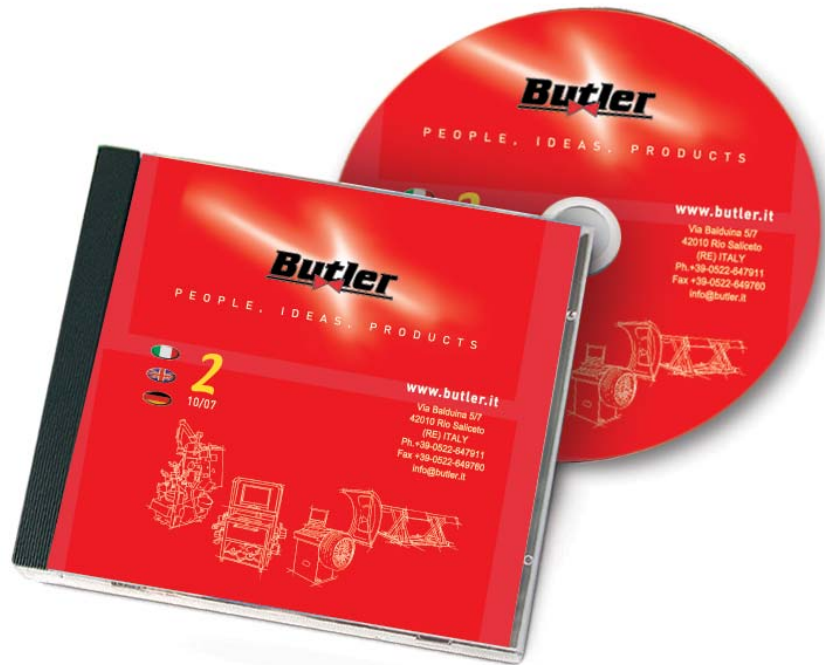
GERMANY

UK

JAPAN

Spare parts

20 ¹⁹⁸⁸₂₀₀₈
years of
Butler



Besides the local availability of complete equipment, Butler also guarantees the availability of spare parts, with a specialized spare parts service:

Hot Line

Dedicated internet reserved area
manuals on cd

exploded views + parts lists on cd

Training

1988
2008
20 years of
Butler

Butler believes that training business partners sales and service staff is of the utmost importance to guarantee the company success.

Many days are devoted to training, both at the main seat and branches, but also with training sessions organized at customers premises.

Butler training center is located in:

Rio Saliceto ITALY

- 40 minutes from BOLOGNA INTERNATIONAL AIRPORT
 - 10 minutes from CARPI MOTORWAY EXIT (Verona - Modena A22 Motorway)
-

Butler technicians speak fluent *English, French, Spanish, German, Dutch* so e-mail or phone replies can be received all day long in one of these languages.

Butler technicians are also regularly travelling around the world to assist and train locally the staff of our importers.



The Company

20 ¹⁹⁸⁸₂₀₀₈
years of
Butler

Present and planned investments

in the 4 production plants of the Butler Group are in fact considering a turnover development up to **175 millions euro**.

This is the mid-term target of consolidated sales for the Butler Group.



The Company



Every year 4% of the turnover is invested in R&D

Hereafter the most recent investments for in production plants and machinery:

- 2.4 millions euro (3.6 millions USD) in 2005
- 6 millions euro (9 millions USD) in 2006
(including the extension of the Ostellato plant)
- 11 millions euro (16.5 millions USD) in 2007
(including the new Butler plant)



Investments 2009

Pontecchio

- New office building
- New training center

Trana

- Welding unit for alignment components
- New testing area for measurement precision on aligners and test lanes



Investments 2010



Investments 2010

Rio/Rolo

- new building works re-started





Engineering & Marketing S.p.A. S.u.

Via Balduina 5/7 - 42010 Rio Saliceto (RE) ITALY

Ph.+39-0522-647911 - Fax +39-0522-649760

info@butler.it

www.butler.it